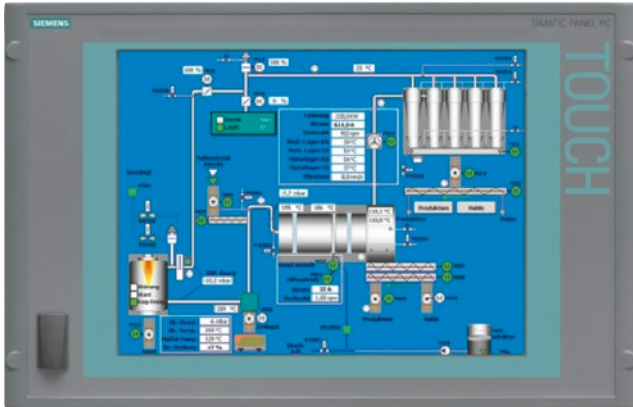


Panel PC SIMATIC HMI IPC577C



Rugged, expandable industry PC for demanding tasks in the area of PC-based automation with various control units (front panels):

- Rugged and compact design for industrial use
- Full PC openness
 - Touch screen control units with 12", 15" and 19" TFT display
 - 12" and 15" TFT Key
- Expandable using a PCI slot
- Optionally PROFIBUS DP or PROFINET (RT/IRT) onboard
- Installation-compatible with Panel PC 577B
- High degree of investment protection

Design

The SIMATIC HMI IPC is equipped as follows:

Computing unit

- Processor:
 - Intel Core2 Duo processor/1.86 GHz or
 - Intel Core2 Solo 1.2 GHz or
 - Intel Celeron M 1.2 GHz
- Main memory configuration:
 - 1 GB, 2 GB or 4 GB (SO-DIMM DDR3)
- Retentive memory
- Mass storage
 - Solid State Disc (SSD) \geq 50 GB for maximum shock tolerance since there are no rotating parts, or
 - Hard disk HDD \geq 250 GB (3.5" SATA) with vibration-absorbent hard disk holder, which ensures reliable operation even under conditions of high mechanical stress, and/or
 - CF card (2 GB, 4 GB, or 8 GB)
- Onboard graphics
- Interfaces:
 - 2 x LAN 10/100/1000 Mbit/s Ethernet interface (RJ45), with PROFINET only 1 x LAN
 - 4 x USB 2.0 interfaces on rear + 1 x USB 2.0 interface on front; all high current (500 mA)

- 1 x serial V.24 (9-pin)
- Free slots for expansions:
 - 1 x PCI (slots with card retainer)
 - 1 x slot for Compact Flash Card (externally accessible)
- Power supply:
 - 24 V DC or 100/240 V AC (autorange), 50/60 Hz
- Drive (optional)
 - DVD \pm RW \pm R combo drive
- Fieldbus onboard (optional)
 - 11 x PROFIBUS DP/MPI (CP5611 compatible)
 - 1 x PROFINET onboard, 3 x RJ45 (CP1616 compatible)

Operating unit

Operating units are available in the following sizes/resolutions:

- 12" Key: 12.1" TFT color display, 800 x 600 pixels
- Membrane keyboard with tactile feedback and integral mouse
- 12" Touch: 12.1" TFT color display, 800 x 600 pixels (SVGA)
- 15" Key: 15.1" TFT color display, 1024 x 768 pixels
- Membrane keyboard with tactile feedback and integral mouse
- 15" Touch: 15.1" TFT color display, 1024 x 768 pixels (XGA)
- 19" Touch: 19.1" TFT color display, 1280 x 1024 pixels (SXGA)

The operating units have the following functionality:

- Analog resistive touch screen or tactile membrane keyboard with system keys and 36 user-configurable function keys
- Degree of protection IP65 and NEMA 4
- USB 2.0 interface on the front for connecting external peripherals such as mouse or keyboard

Expansion components (accessories)

SIMATIC IPC DiagMonitor

- PC diagnostics/alarm software for the early detection and diagnosis of PC problems

SIMATIC IPC Image & Partition Creator

- Software tool for preventive data back-up of the contents of bulk storage (CF cards, hard disks)
- High-speed restoring of system and data partitions with bit accuracy; user software and special installations are also backed up
- Software tool for adaptation of mass storage partitioning.

SIMATIC IPC USB FlashDrive

- Mobile memory medium for SIMATIC IPC/PG

SIMATIC IPC Service USB FlashDrive

- Mobile memory medium provides security and is capable of restoring mass memory
- Pre-installed Image & Partition Creator V3.0
- Ultra compact and robust

Industrial USB Hub 4

- Industry-standard USB 2.0 hub, front IP65

Additional accessories

- Touch pen (cannot be lost) for operating the touch devices
- Protective membranes to protect the touch screen against dirt/scratches
- Labeling membranes for labeling the user-configurable function keys of the key devices

Technical specifications Panel PC SIMATIC HMI IPC577C

Type	6AV7 885..
General features	
Processors	Intel Celeron M 1.2 GHz, Intel Core2 Solo 1.2 GHz, or Intel Core2 Duo 1.86 GHz
Memory type	DDR3-RAM
Main memory	1 GB, 2 GB or 4 GB
Free slots	1 x CF card slot (externally accessible) 1 x PCI slot
Operating system	Windows Embedded Standard 2009 (EN/DE), Windows XP Professional Multi-Language ¹⁾ , Windows Embedded Standard 7, Windows 7 Ultimate
Additional OS information	Languages: English / German
SIMATIC Software	Optionally with preinstalled bundle software SIMATIC WinCC flexible 2008 SP1 and/or WinAC RTX 2009 SIMATIC WinCC as web client or standard client
Drives	
Floppy drive	Optional via external USB floppy drive
Optical drives	Optional DVD±RW±R combination drive or external drive via USB
Hard disk/mass storage	SSD (Solid State Disk) with 50 GB (SATA, SLC) and/or HDD with 250 GB and/or Compact Flash with 2, 4 or 8 GB
Interfaces	
External graphics interface	DVI-I for additional display unit: Color depth 32 bits
Connection for keyboard/mouse	USB / USB
Serial interface	COM1: 1 x V.24 (RS232)
PROFIBUS/MPI	Optionally onboard, isolated, max. 12 Mbit/s, no plug-in card required, CP5611-compatible, not upgradeable
PROFINET (IRT)	Optional onboard, 3 x RJ 45, CP 1616-compatible, not upgradeable

Type	6AV7 885..
PROFINET (IE), Ethernet	Onboard, 2 x 10/100/1000 Mbit (RJ45 without/with PROFIBUS), 1 x 10/100/1000 Mbit (RJ45 with PROFINET), no plug-in card necessary
USB	1 x on front, 4 x on rear, USB 2.0 (500 mA)
Audio	Possible via USB (external)
Multimedia	No
Supply voltage	
Supply voltage	24 V DC or 100/240 V AC
Monitoring functions	
Temperature	Yes
Watchdog	Yes
DiagBit (similar to S.M.A.R.T.)	Yes (for CF cards, HDD and SSD)
Front side according to EN 60529	IP65 (on the front), tested according to EN 60529 and NEMA4
Ambient conditions	
Vibration load during operation	Tested according to DIN IEC 60068-2-6: 10 to 58 Hz: 0.075 mm, 58 to 200 Hz: 10 m/s ² (1 g) ³⁾
Shock loading during operation	Tested according to DIN IEC 60068-2-27: 50 m/s ² (5 g), 30 ms, 100 shocks
Relative humidity	Tested according to DIN IEC 60068-78, DIN IEC 60068-2-30: 5% to 80% at 25 °C (no condensation)
Maximum permissible installation angle +/-	45° over vertical
Ambient temperature during operation	0 °C ... +50 °C in maximum configuration
Certifications & standards	
Approvals	CE, cULus(508)
EMC	CE, FCC A, 55022A, EN 61000-6-4 ²⁾ , EN 61000-6-2

1) Multi-Language means:
German/English/French/Italian/Spanish/Chinese traditional/Chinese simplified/Korean/Japanese

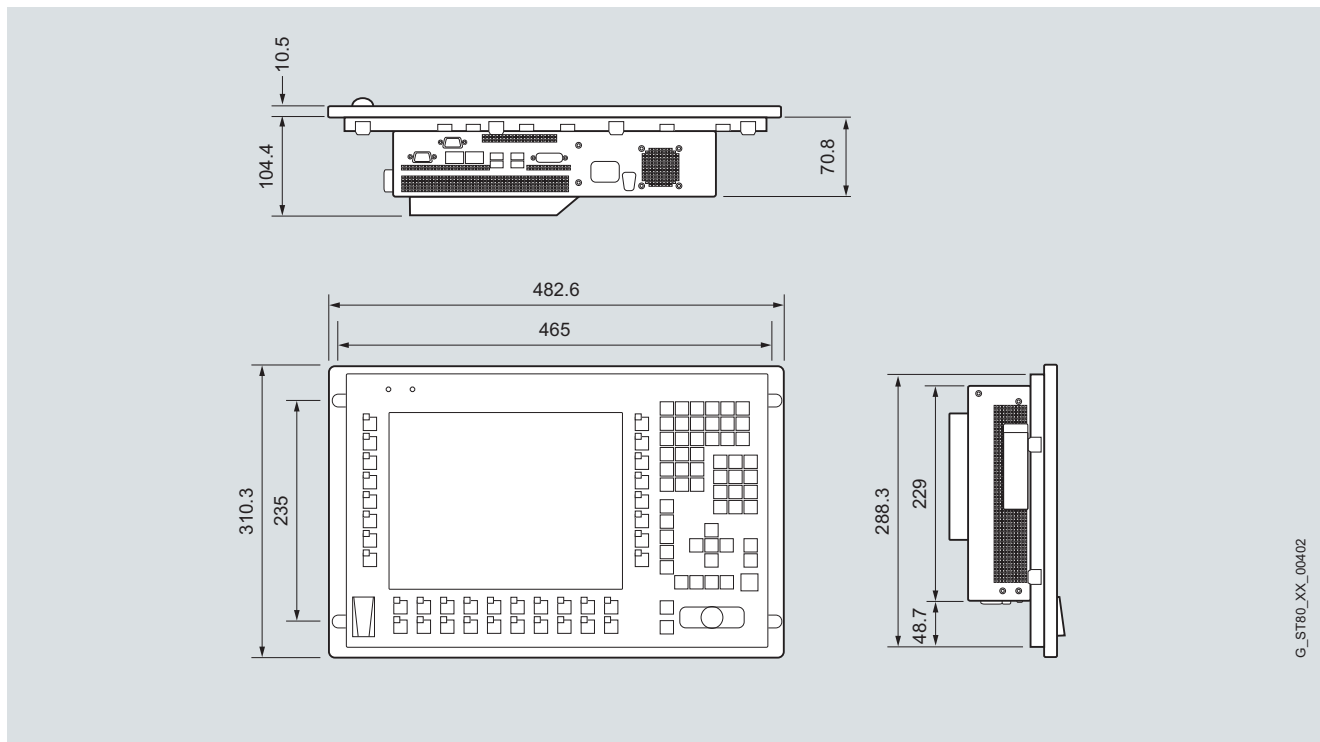
2) 61000-6-2 replaces 50082-2; 61000-6-4 replaces 50081-2

3) Valid with CF or SSD; with HDD: 5 g/0.5 g

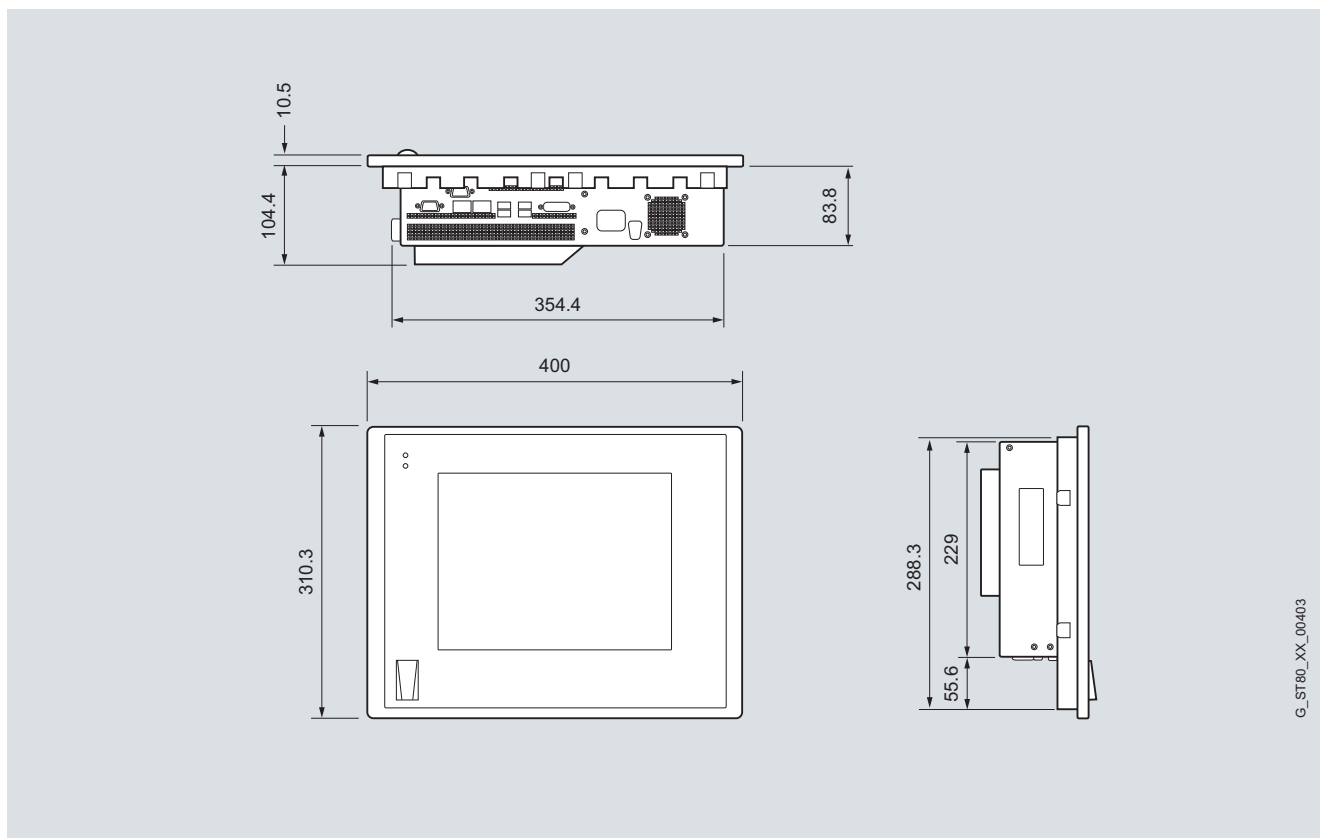
4) Valid with CF or SSD; with HDD: +5 °C to 45 °C

Type	6AV7 885-0	6AV7 885-1	6AV7 885-2	6AV7 885-3	6AV7 885-5
Front panel	12" TFT Touch	12" TFT Key	15" TFT Touch	15" TFT Key	19" TFT Touch
Display					
Resolution (W x H in pixels)	800 x 600	800 x 600	1024 x 768	1024 x 768	1280 x 1024
MTBF backlit display (at 25 °C)	50000 h at 24 h continuous operation, temperature-dependent	50000 h at 24 h continuous operation, temperature-dependent	50000 h at 24 h continuous operation, temperature-dependent	50000 h at 24 h continuous operation, temperature-dependent	50000 h at 24 h continuous operation, temperature-dependent
Type of operation					
Function keys	No	Yes	No	Yes	No
Alphanumeric keyboard	No	Yes	No	Yes	No
Touch screen (analog/resistive)	Yes	No	Yes	No	Yes
Mouse on the front	No	Yes	No	Yes	No
Design					
Centralized configuration	Yes	Yes	Yes	Yes	Yes
Distributed configuration	No	No	No	No	No
Dimensions					
Mounting dimensions in centralized configuration (W x H x D, without optical drive) in mm	368 x 290 x 84	450 x 290 x 84	450 x 290 x 87	450 x 321 x 87	450 x 380 x 94
Operator control unit (W x H) in mm	400 x 310	483 x 310	483 x 310	483 x 355	483 x 400
Weights	8.0 kg	8.0 kg	9.0 kg	9.0 kg	11.5 kg
General features					
Accessories	Touch protective membranes	Keyboard slide-in labels	Touch protective membranes	Keyboard slide-in labels	Touch protective membranes
Power loss in maximum configuration	24 V DC: max. 55 W	24 V DC: max. 55 W	24 V DC: max. 57 W	24 V DC: max. 57 W	24 V DC: max. 84 W

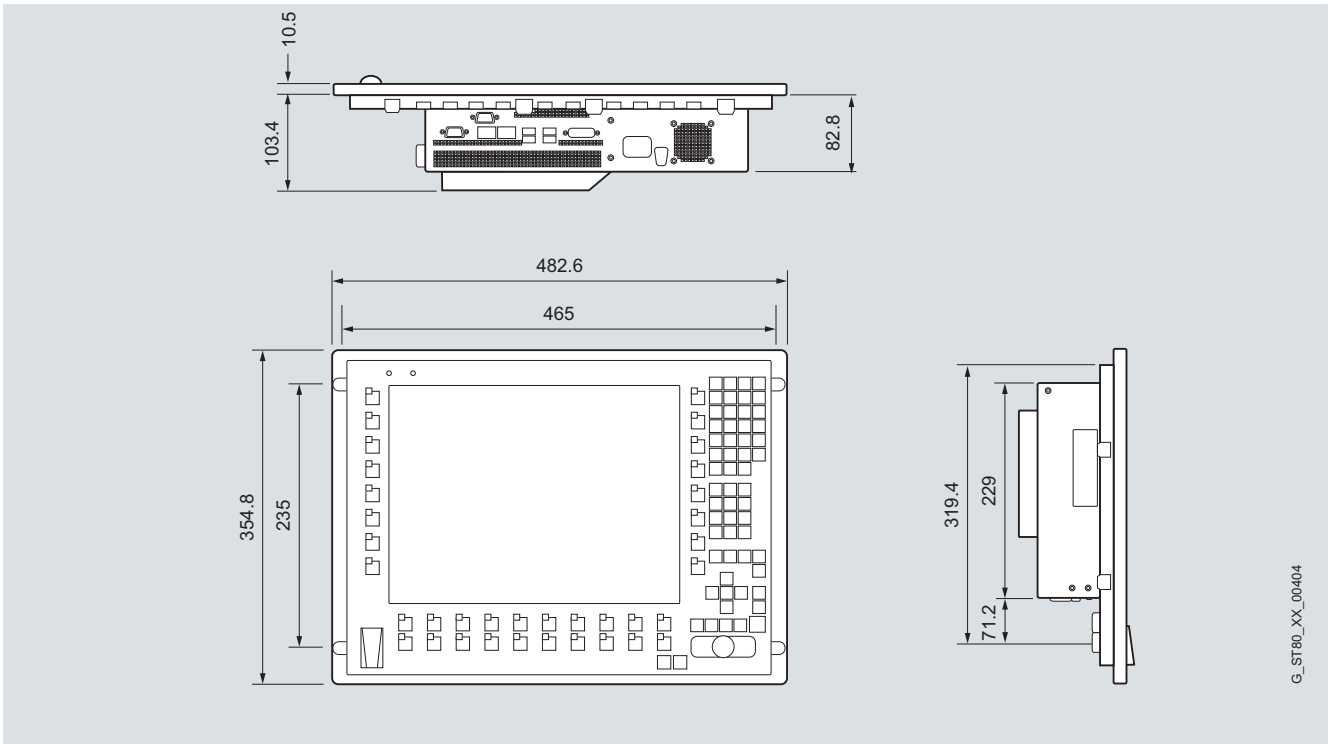
Dimensional drawings



SIMATIC HMI IPC577C 12" Key version

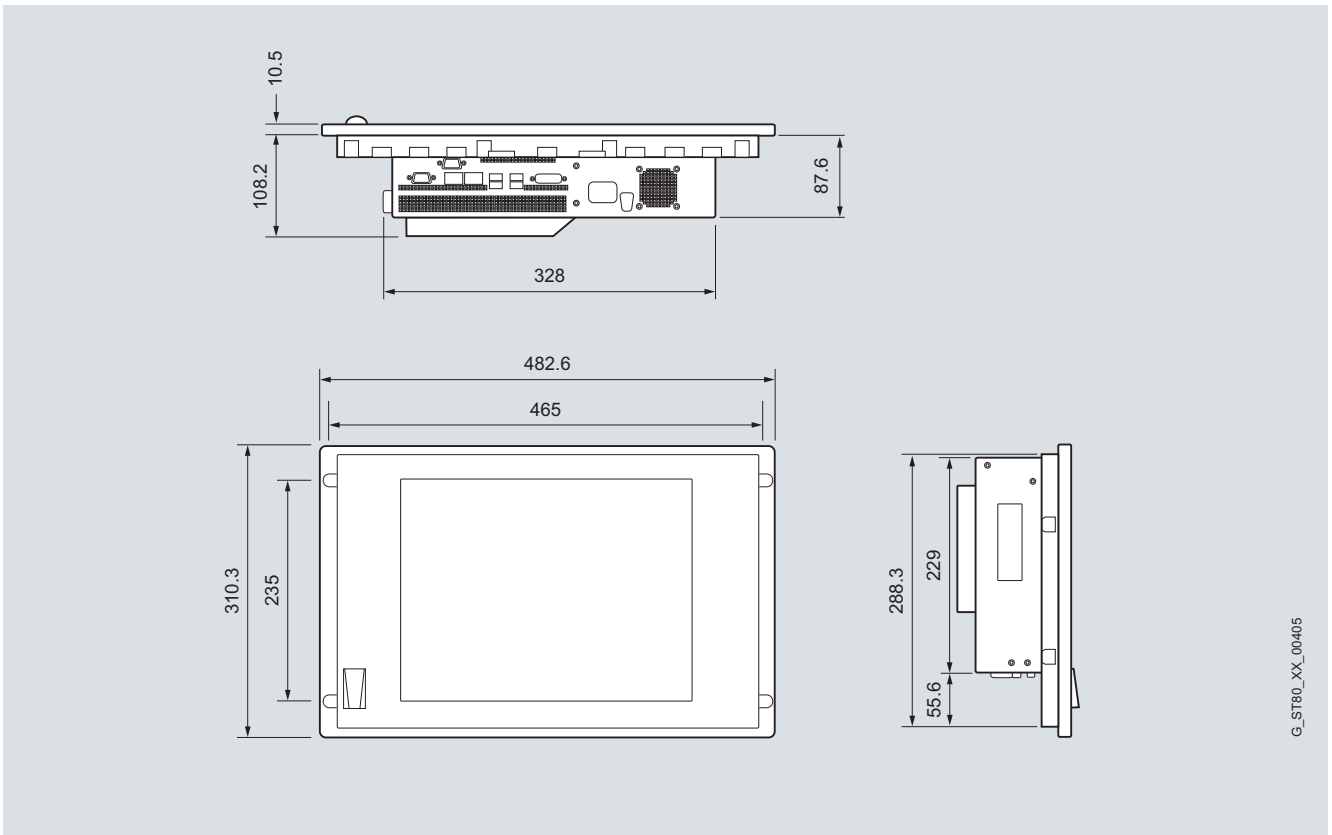


SIMATIC HMI IPC577C 12" Touch version



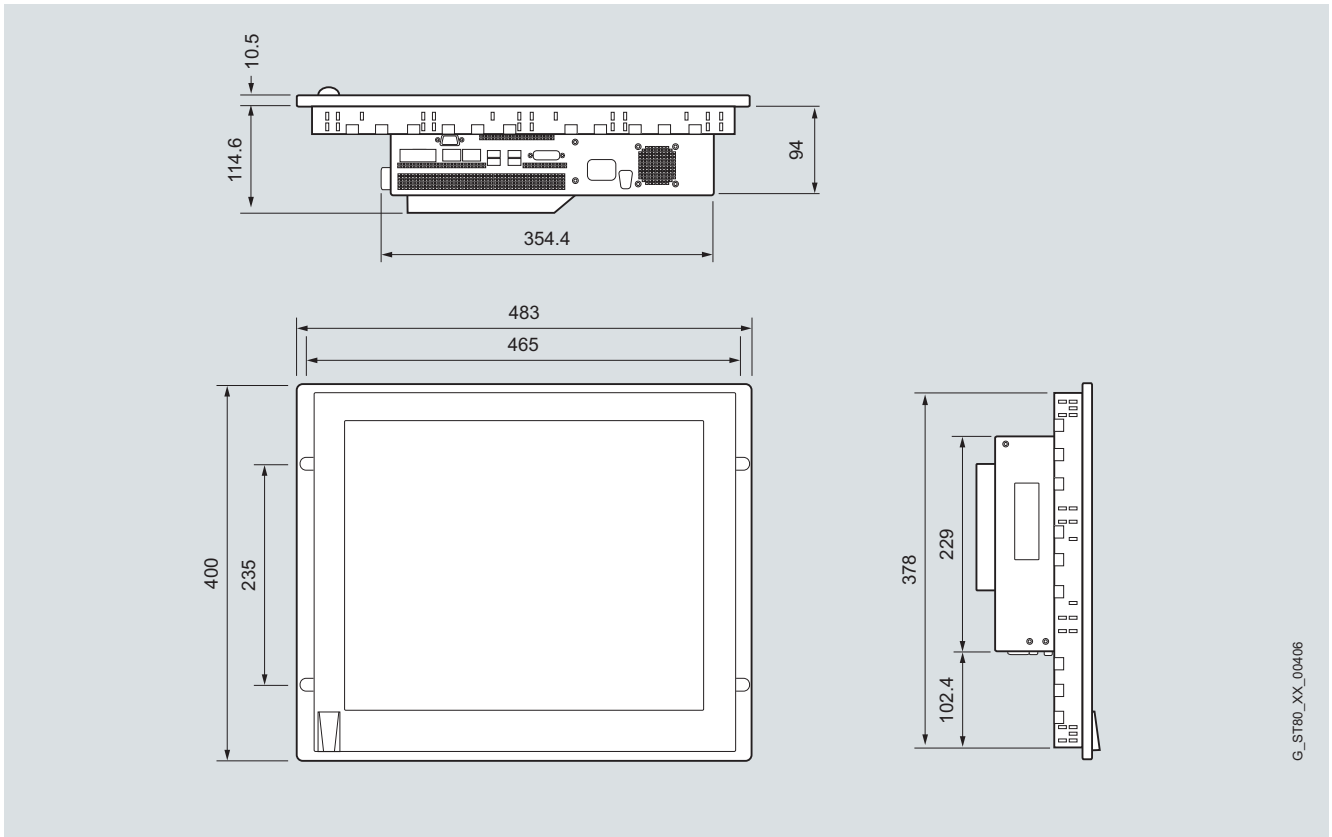
G_ST80_XX_00404

SIMATIC HMI IPC577C 15" Key version



G_ST80_XX_00405

SIMATIC HMI IPC577C 15" Touch version



G_ST80_XX_00406

SIMATIC HMI IPC577C 19" Touch version

SIMATIC IPC – the more Industrial PC	
The optimum configuration for your application:	www.siemens.com/ipc-configurator
In-depth information is available in the SIMATIC manuals:	www.siemens.com/simatic-doku
Information material for download:	www.siemens.com/simatic/printmaterial
Technical documentation is available in our Service & Support portal:	www.siemens.com/automation/support
Your personal contact partner is listed at:	www.siemens.com/automation/partner
Electronic ordering via the Internet with the Mall:	www.siemens.com/automation/mall
Online Service Tool PED – for fast information on the equipment of your SIMATIC PC and the management of your field inventory:	www.siemens.com/ped
Additional information in the Internet:	www.siemens.com/panel-pc