

\*\*\*SPARE PART\*\*\* SIMATIC FLAT PANEL 15T 15 INCH TOUCH  
TFT-DISPLAY WITH 1024X768 PIXEL RESOLUTION FOR 24V DC  
VGA, DVI-D INTERFACE INCL. VGA-CABLE 1,8M

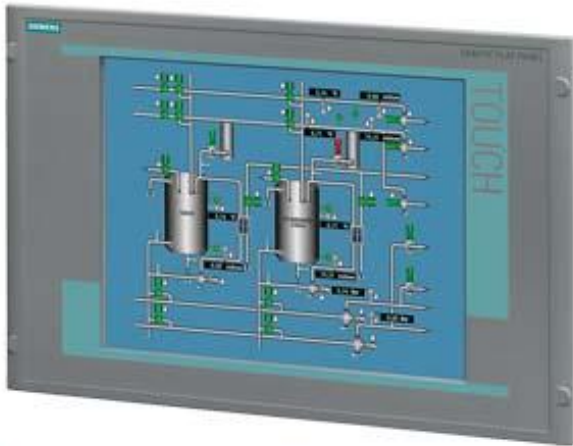


Figure similar

Display	
Design of display	TFT
Screen diagonal	15 in
Display width	304.1 mm
Display height	228.1 mm
Viewing angle	100° x 90° (min)
On Screen Display (OSD) configuration	Yes
Number of colors	16 000 000; 16.2 million
Resolution (pixels)	
• Horizontal image resolution	1 024 Pixel
• Vertical image resolution	768 Pixel
General features	
• Brightness/contrast	> 260 cd/m <sup>2</sup> / 350:1
Control elements	
Input device	
• Integrated mouse cursor control	No
Keyboard fonts	

- Function keys
- Number of function keys

No

0

### Installation type/mounting

Rack mounting	Yes
VESA mounting	No

### Supply voltage

Type of supply voltage	AC/DC
permissible range, lower limit (DC)	19.2 V
permissible range, upper limit (DC)	28.8 V
permissible range, lower limit (AC)	90 V
permissible range, upper limit (AC)	264 V

### Interfaces

#### Video interfaces

- analog video signal (VGA) Yes

### Degree and class of protection

IP54 at front	Yes; For screw mounting in 19" rack
IP65 at front	Yes; if mounted with the supplied latch fasteners

### Standards, approvals, certificates

UL approval	Yes
EAC (formerly Gost-R)	No

#### Marine approval

- Germanischer Lloyd (GL) Yes; Optional
- American Bureau of Shipping (ABS) Yes; Optional
- Bureau Veritas (BV) Yes; Optional
- Det Norske Veritas (DNV) Yes; Optional
- Lloyds Register of Shipping (LRS) Yes; Optional

### Ambient conditions

#### Ambient temperature during operation

- min. 0 °C
- max. 50 °C

### Dimensions

Width of the housing front	483 mm
Height of housing front	310 mm
Mounting cutout, width	450 mm
Mounting cutout, height	290 mm
Overall depth	55 mm

**last modified:** 04/24/2017