



SAFETY POSITION SWITCHES WITH SOLENOID INTERLOCKING LOCK. FORCE 1300N,5 APPR. DIR. PLASTIC ENCLOSURE,3X(M20X1.5) SPRING-LOCKED, AUXILIARY RELEASE W. LOCK MAGNET VOLTAGE 230V AC, MONITOR. OF ACTUATOR 2NC/1NO, MONITOR. OF MAGNET 2NC/1NO LEDS YELLOW/GREEN DELIVERY WITHOUT ACTUATOR. PLEASE ORDER SEPARATELY.

Figure similar

Product designation	position switch with tumbler
Design of the product	with separate actuator and with tumbler
Manufacturer's article number	3SE5000-0AV01 standard actuator, 3SE5000-0AV02 actuator with vertical mounting, 3SE5000-0AV03 actuator with transverse mounting, 3SE5000-0AV04 radius actuator left, 3SE5000-0AV05 universal actuator, 3SE5000-0AV06 radius actuator right, 3SE5000-0AV07 heavy duty actuator
<ul style="list-style-type: none"> of the optional actuators 	

General technical data	
Product function	Yes
<ul style="list-style-type: none"> positive opening 	
Insulation voltage	250 V
<ul style="list-style-type: none"> rated value 	
Degree of pollution	class 3
Surge voltage resistance rated value	4 kV
Protection class IP	IP66/IP67
Shock resistance	30g / 11 ms
<ul style="list-style-type: none"> acc. to IEC 60068-2-27 	30 g / 11 ms

Vibration resistance • acc. to IEC 60068-2-6	0.35 mm / 5g 0.35 mm/5g
Mechanical service life (switching cycles) • typical	1 000 000
Electrical endurance (switching cycles) with contactor 3RH11, 3RT1016, 3RT1017, 3RT1024, 3RT1025, 3RT1026 typical	1 000 000
Electrical operating cycles in one hour with contactor 3RH11, 3RT1016, 3RT1017, 3RT1024, 3RT1025, 3RT1026	6 000
Thermal current	6 A
Material of the enclosure of the switch head	plastic
Equipment marking • acc. to DIN EN 61346-2 • acc. to DIN EN 81346-2	B B
Continuous current of the C characteristic MCB	1 A; for a short-circuit current smaller than 400 A
Continuous current of the quick DIAZED fuse link	10 A; for a short-circuit current smaller than 400 A
Continuous current of the DIAZED fuse link gG	6 A; for a short-circuit current smaller than 400 A
Locking force • acc. to DIN EN ISO 14119	1 300 N 1 000 N
Repeat accuracy	0.05 mm
Minimum actuating force in activation direction	30 N
Operating current at AC-15 • at 24 V rated value • at 125 V rated value • at 230 V rated value	6 A 3 A 1.5 A
Operating current at DC-13 • at 24 V rated value • at 125 V rated value • at 230 V rated value	3 A 0.55 A 0.27 A

Enclosure

Design of the housing	special design
Material of the enclosure	plastic
Design of the housing acc. to standard	No

Drive Head

Design of the operating mechanism	5 directions of approach
Design of the switching function	positive opening
Number of actuation directions	5

Connections/Terminals

Type of electrical connection	screw-type terminals
Type of connectable conductor cross-sections • solid	1x (0.5 ... 1.5 mm ²), 2x (0.5 ... 0.75 mm ²)

- finely stranded with core end processing
- at AWG conductors solid
- at AWG conductors stranded

1x (0.5 ... 1.5 mm²), 2x (0.5 ... 0.75 mm²)
 1x (20 ... 16), 2x (20 ... 18)
 1x (20 ... 16), 2x (20 ... 18)

Mechanical data

Cable entry type	3 x (M20 x 1.5)
Locking mechanism design	spring-actuated lock (closed-circuit principle) with auxiliary release and lock

Communication/ Protocol

Design of the interface	without
--------------------------------	---------

Ambient conditions

Ambient temperature	
• during operation	-25 ... +60 °C
• during storage	-40 ... +80 °C

Supply voltage

Type of voltage of the supply voltage	
• of the optional LED indicator	AC
Supply voltage	
• of LED	230 V
Supply voltage of magnet coil	230 V

Installation/ mounting/ dimensions

Mounting position	any
Mounting type	screw fixing

Certificates/approvals

General Product Approval	Functional Safety/Safety of Machinery	Declaration of Conformity
 CCC	 CSA	 UL
		
		Type Examination Certificate
 EG-Konf.		

Test Certificates	other
Special Test Certificate	Confirmation

Further information

Information- and Downloadcenter (Catalogs, Brochures,...)

<http://www.siemens.com/industrial-controls/catalogs>

Industry Mall (Online ordering system)

<https://mall.industry.siemens.com/mall/en/en/Catalog/product?mlfb=3SE5322-3SE23>

Cax online generator

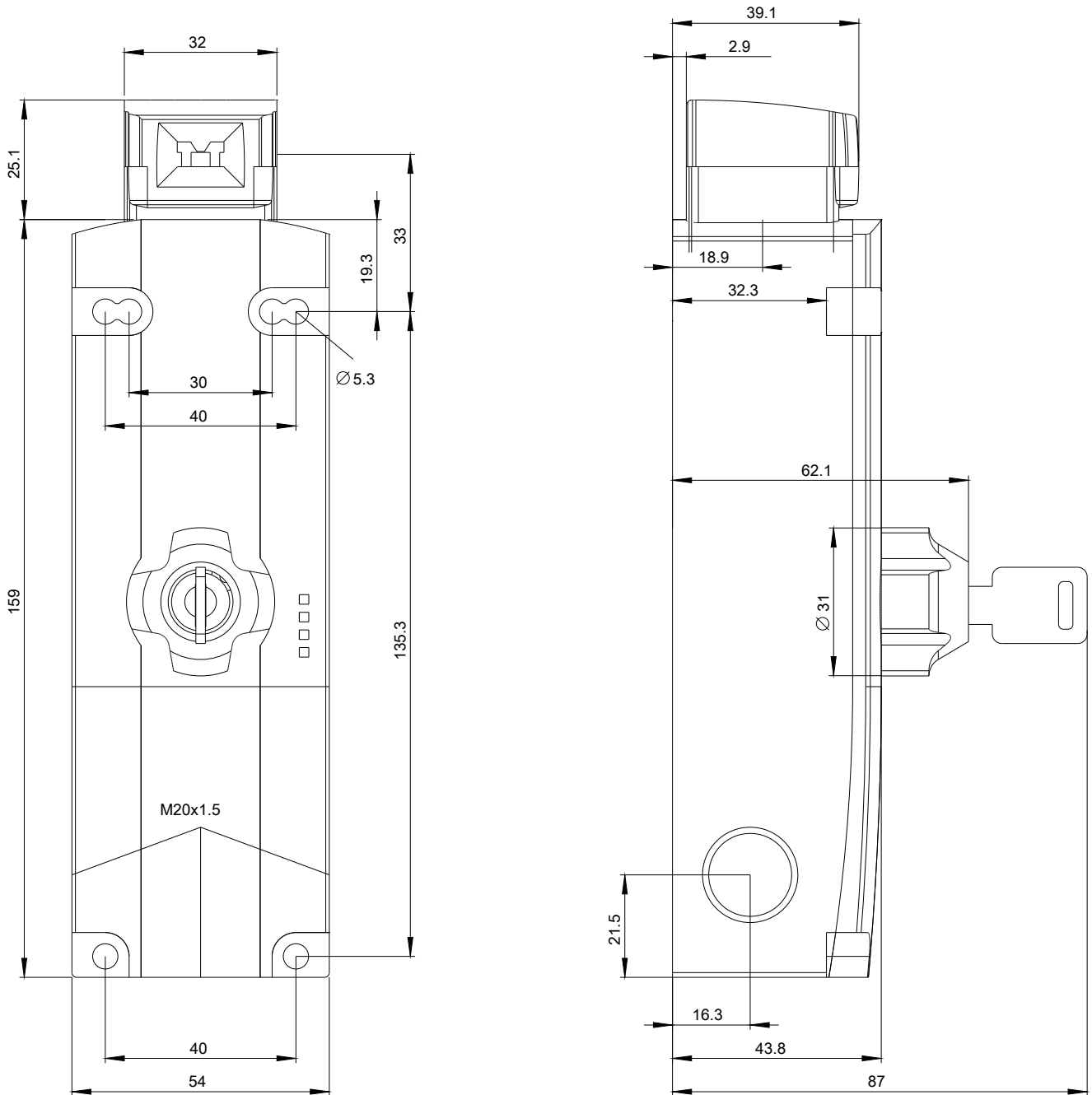
<http://support.automation.siemens.com/WW/CAXorder/default.aspx?lang=en&mlfb=3SE5322-3SE23>

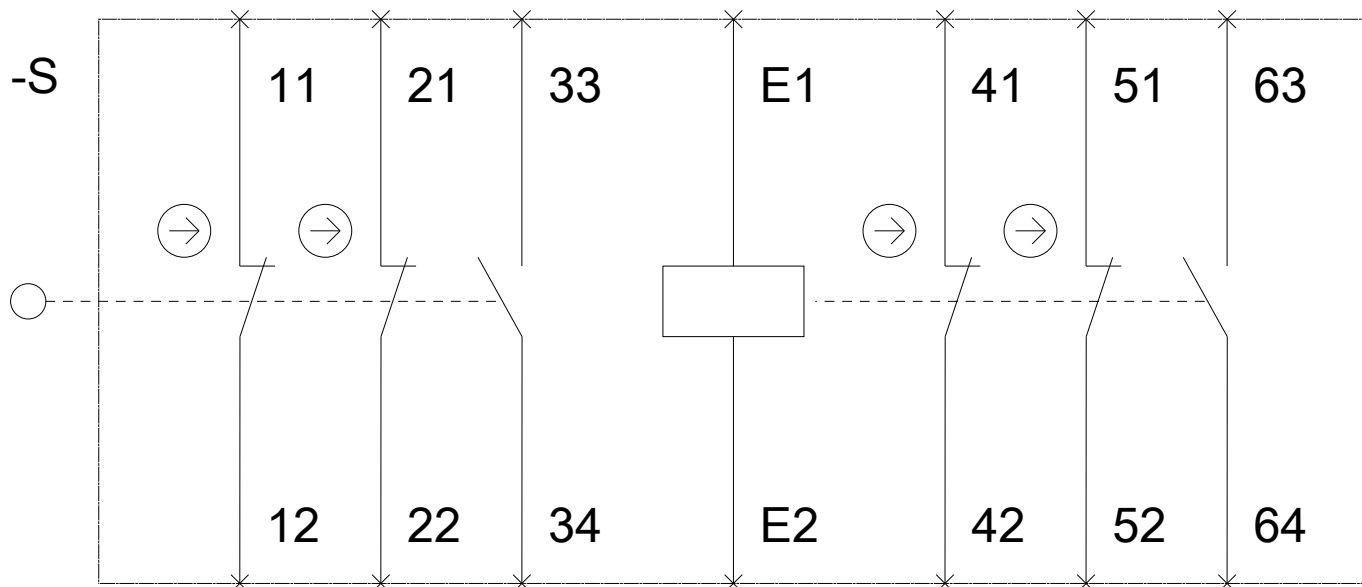
Service&Support (Manuals, Certificates, Characteristics, FAQs,...)

<https://support.industry.siemens.com/cs/ww/en/ps/3SE5322-3SE23>

Image database (product images, 2D dimension drawings, 3D models, device circuit diagrams, EPLAN macros, ...)

http://www.automation.siemens.com/bilddb/cax_de.aspx?mlfb=3SE5322-3SE23&lang=en







last modified:

07/11/2017