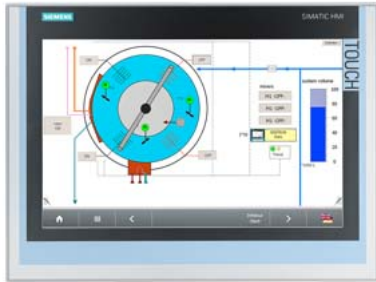


SIMATIC ITC 1500, Industrial Thin Client, 15" widescreen TFT display, Touch operation, Supported protocols: RDP, VNC, SMARTSERVER, Web



General information	
Product type designation	ITC1500
Display	
Design of display	TFT widescreen display, LED backlighting
Screen diagonal	15.4 in; 15"
Display width	331.2 mm
Display height	207 mm
Number of colors	16 777 216
Resolution (pixels)	
• Image resolution	1 280 x 800
• Horizontal image resolution	1 280 pixel
• Vertical image resolution	800 pixel
General features	
• Detachable from computer unit	100 m
Backlighting	
• Type of backlighting	LED, dimmable
• Backlight dimmable	Yes; 5-100 %
Control elements	
Control elements	single-touch screen
Touch operation	
• Design as touch screen	Yes
• Monitor keyboard	Yes
Installation type/mounting	
Design	Built-in unit
Front mounting	Yes
Support arm mounting	No
Stand mounting	No
Built-in unit	Yes
Supply voltage	
Type of supply voltage	DC
Rated value (DC)	24 V
permissible range, lower limit (DC)	19.2 V
permissible range, upper limit (DC)	28.8 V
Input current	
Current consumption, max.	1.5 A
Starting current inrush I <sup>2t</sup>	0.5 A <sup>2</sup> ·s
Interfaces	

Number of industrial Ethernet interfaces	1
Number of USB interfaces	2; on rear
USB on the rear	Yes; 2x onboard
Connection for keyboard/mouse	USB
<b>Industrial Ethernet</b>	
• Transmission rate, max.	1 000 Mbit/s
<b>Protocols</b>	
<b>Protocols (Ethernet)</b>	
• TCP/IP	Yes
• DHCP	Yes
• SNMP	Yes
• DCP	Yes
• LLDP	Yes
<b>WEB characteristics</b>	
• HTTP	Yes
• HTML	Yes; HTML5
• XML	Yes
• CSS	Yes
• JavaScript	Yes
<b>Protocols (terminal link)</b>	
• Sm@rtServer	Yes
• RDP	Yes
• VNC viewer	Yes
• Citrix	No
• SINUMERIK	No
<b>Standards, approvals, certificates</b>	
CE mark	Yes
cULus	Yes
RCM (formerly C-TICK)	Yes
KC approval	Yes
<b>Use in hazardous areas</b>	
• cULus Class I Zone 1	No
• cULus Class I Zone 2, Division 2	Yes; Available soon
• FM Class I Division 2	Yes; Available soon
<b>Ambient conditions</b>	
<b>Ambient temperature during operation</b>	
• min.	0 °C
• max.	50 °C
<b>Ambient temperature during storage/transportation</b>	
• min.	-20 °C
• max.	60 °C
<b>Relative humidity</b>	
• Operation, max.	90 %
<b>Software</b>	
Web browser	Yes
PDF reader	Yes
<b>Configuration</b>	
<b>Configuration</b>	
• Local	Yes
• Remote	Yes; With Remote Configuration Center (RCC) as of V2.0
<b>Languages</b>	
<b>Online languages</b>	
• Number of online/runtime languages	2; german / english
<b>Peripherals/Options</b>	
USB memory	Yes; USB storage medium can be connected
<b>Mechanics/material</b>	
Enclosure material (front)	

- Aluminum

Yes

#### Dimensions

Width of the housing front	415 mm
Height of housing front	310 mm
Mounting cutout, width	396 mm
Mounting cutout, height	291 mm
Overall depth	75 mm

#### Weights

Weight without packaging	5.2 kg
Weight incl. packaging	5.7 kg

**last modified:**

1/16/2021 