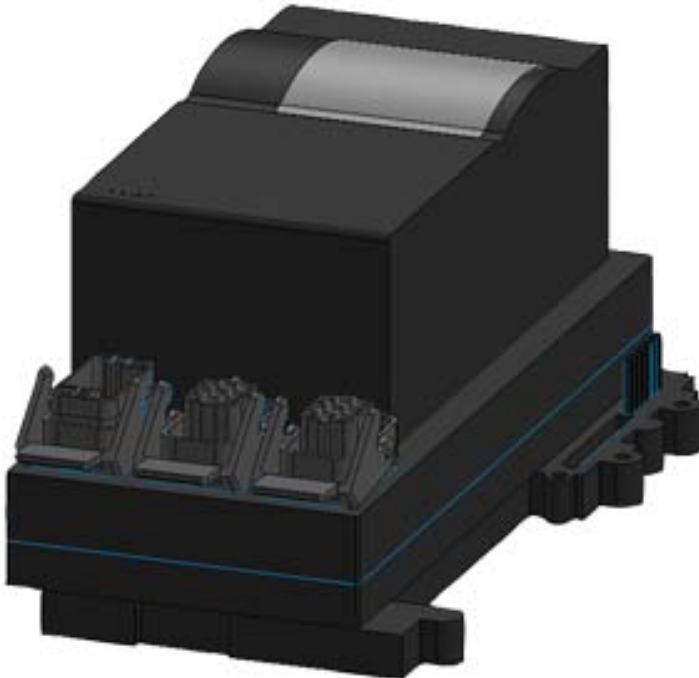


EM 300 RS, FOR ET 200 X, ELECTRO-MECH.
 REVERS. STARTER, SETTING RANGE 0.45...0.63A,
 AC-3, 0.18KW/400V, WITH BRAKE CONTACT, AC
 400V/, F. INTERNALLY SUPPLIED BRAKES WITH 9-
 POLE MOTOR FEEDER AND 9-POLE POWER
 CONNECTION



General technical data:

Design of the product		reversing starter
Product function Bus communication		Yes
Protocol is supported		
• AS-interface protocol		No
• PROFIBUS DP protocol		Yes
Product component Motor brake output		Yes
Equipment marking acc. to DIN EN 61346-2		Q
Equipment marking acc. to DIN 40719 extended according to IEC 204-2 acc. to IEC 750		A
Depth	mm	134
Height	mm	270
Width	mm	140

Control circuit/ Control:





Type of voltage		DC
Control supply voltage		
• at DC rated value		
— minimum	V	20.4
— maximum	V	28.8

Main circuit:		
Design of short-circuit protection		circuit-breakers
Type of the motor protection		bimetal
Design of the switching contact		electromechanical
Operating voltage rated value	V	400 ... 500
Operating power		
• at AC-3 at 400 V rated value	kW	0.18
• for three-phase motors at 400 V at 50 Hz		
— minimum	kW	0.18
— maximum	kW	0.18
Adjustable pick-up value current of the current-dependent overload release		
• initial value	A	0.45
• Full-scale value	A	0.63
Maximum short-circuit current breaking capacity (Icu) at 400 V rated value	A	50

Connections/ Terminals:		
Type of electrical connection for main current circuit		tab terminals

Ambient conditions:		
Protection class IP		IP65
Ambient temperature during operation	°C	0 ... 55

Certificates/ approvals:

General Product Approval	Declaration of Conformity	other
 CCC	 CSA	
	 EG-Konf.	Environmental Confirmations
		Confirmation

Further information

Information- and Downloadcenter (Catalogs, Brochures,...)

<http://www.siemens.com/industrial-controls/catalogs>

Industry Mall (Online ordering system)

<http://www.siemens.com/industrymall>

Cax online generator

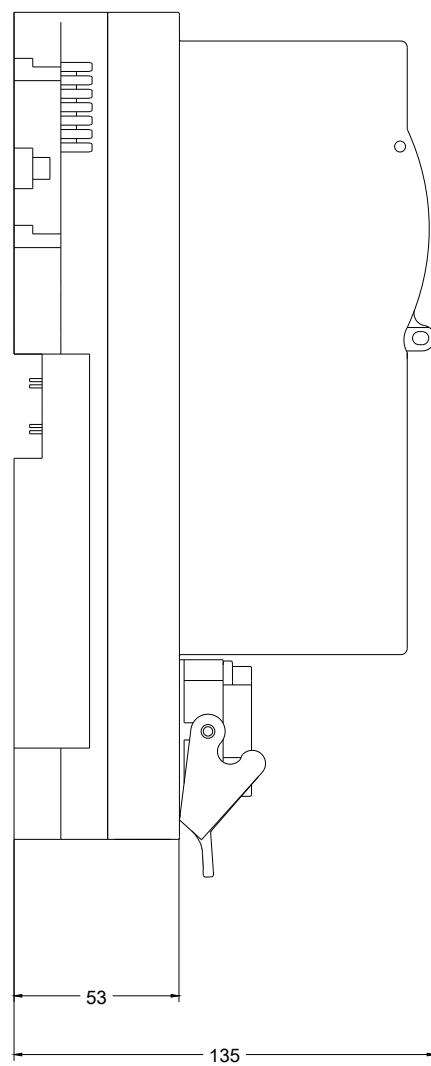
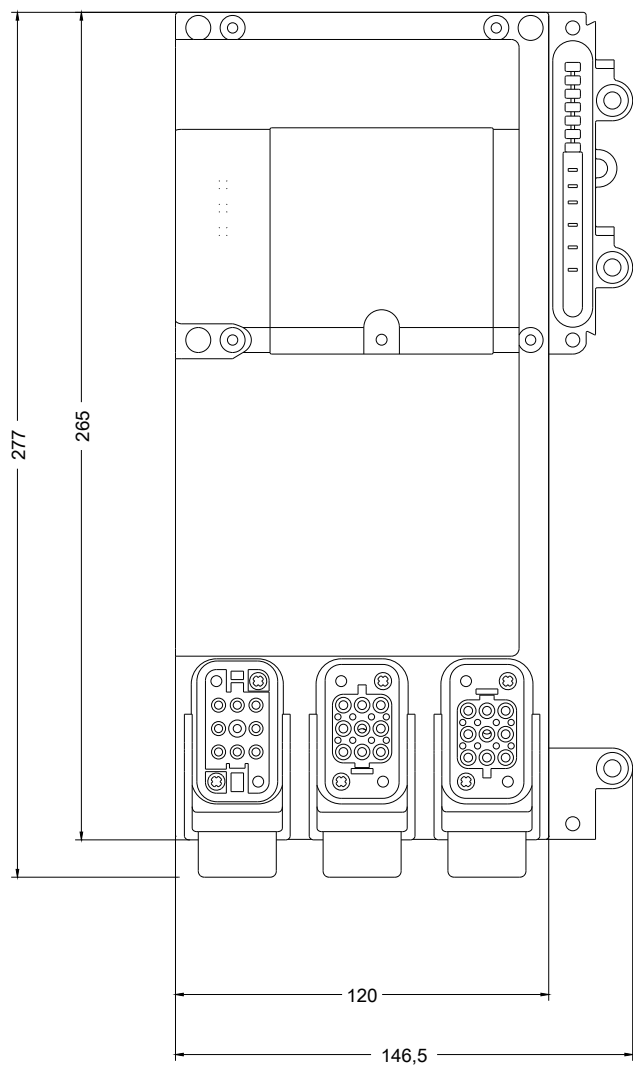
<http://support.automation.siemens.com/WW/CAXorder/default.aspx?lang=en&mlfb=3RK1300-0GS01-1AA3>

Service&Support (Manuals, Certificates, Characteristics, FAQs,...)

<https://support.industry.siemens.com/cs/ww/en/ps/3RK1300-0GS01-1AA3>

Image database (product images, 2D dimension drawings, 3D models, device circuit diagrams, EPLAN macros, ...)

http://www.automation.siemens.com/bilddb/cax_de.aspx?mlfb=3RK1300-0GS01-1AA3&lang=en



last modified:

07/24/2017