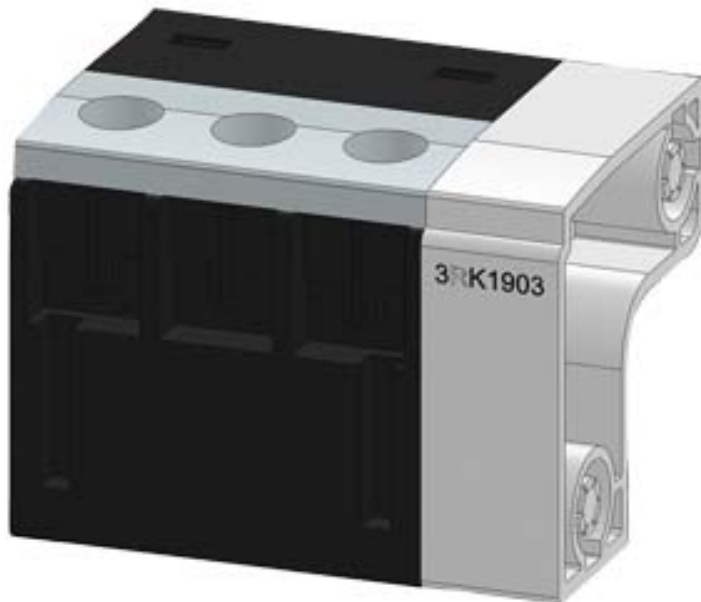


65MM TERMINAL BLOCK PEN FOR ET200S HIGH FEATURE STARTER, WITH CONN. FOR SUPPLY CABLE AND LOADS



General technical data:

Product designation		Terminal block M65-PEN-F
Product description		in combination with TM-DS65-S32 / TM-RS130-S32 including two caps
Protection class IP		IP20
Mounting height	mm	43.5
Installation width	mm	65
Installation depth	mm	42

Installation/ mounting/ dimensions:

Size of the screwdriver tip		Standard screwdriver Size 2
Shape of the screwdriver tip		Pozidriv 2
Tightening torque with screw-type terminals	N·m	2 ... 2.5

Further information

Information- and Downloadcenter (Catalogs, Brochures,...)

<http://www.siemens.com/industrial-controls/catalogs>

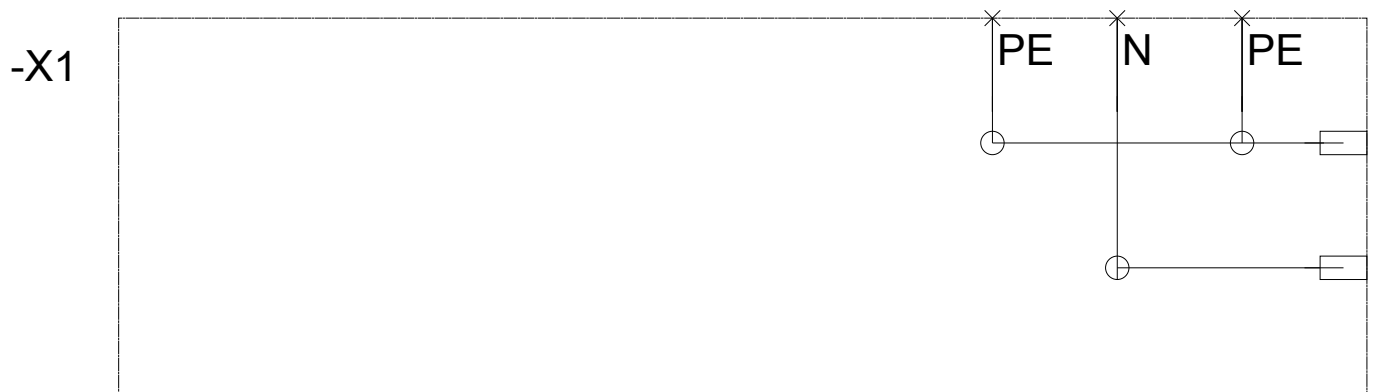
Industry Mall (Online ordering system)

<http://www.siemens.com/industrymall>

Cax online generator

<http://support.automation.siemens.com/WW/CAXorder/default.aspx?lang=en&mlfb=3RK1903-2AC00>





last modified:

07/29/2017