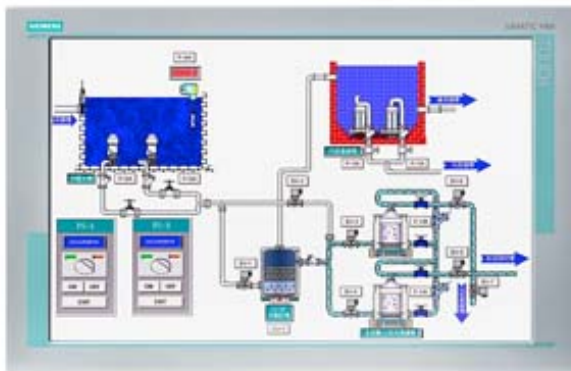


SIMATIC HMI SCD1900 INDUSTRIAL OPERATING UNIT 19 INCH WIDE TOUCH SCREEN WITH 1440X900 PIXEL RESOLUTION FOR 24V DC VGA, DVI-D INTERFACE INCL. DVI-CABLE 1.8M



General information	
Product type designation	SCD 1900
Short designation	Flat Panel 19" touch
Display	
Design of display	TFT widescreen display, LED backlighting
Screen diagonal	19 in
Viewing angle	160° x 170°
On Screen Display (OSD) configuration	Yes
Number of colors	16 777 216; 16.7 million
Resolution (pixels)	
• Horizontal image resolution	1 440 Pixel
• Vertical image resolution	900 Pixel
General features	
• Brightness/contrast	300 cd/m <sup>2</sup> / 1000:1
Installation type/mounting	
Rack mounting	Yes
VESA mounting	No
Built-in unit	Yes

Supply voltage	
Type of supply voltage	DC
permissible range, lower limit (DC)	21.6 V
permissible range, upper limit (DC)	26.4 V

Interfaces	
Video interfaces	
• analog video signal (VGA)	Yes
Touch interfaces	
• USB	Yes

Degree and class of protection	
IP65 at front	Yes
IP20 rear	Yes

Standards, approvals, certificates	
CE mark	Yes; Industry
CSA approval	No
UL approval	Yes
cULus	Yes

Ambient conditions	
Ambient temperature during storage/transportation	
• min.	-20 °C
• max.	60 °C
Shock testing	
• Shock load during operation	10 gn
• Shock load during transport/storage	10 gn

Mechanics/material	
Enclosure material (front)	
• Aluminum	Yes

Weights	
Weight without packaging	6 kg
<b>last modified:</b>	04/24/2017