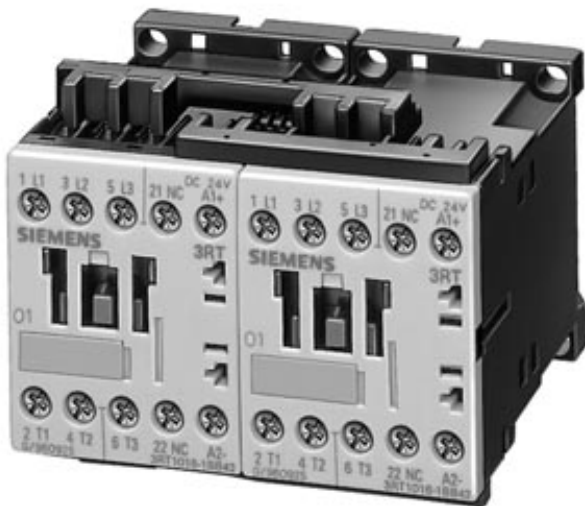


REVERSING CONTACTOR COMBINATION AC-3 3KW/400 V,
3-POLE, SIZES00 SCREW CONNECTION,
DC 24 V, EL. AND MECH. LOCKING DEVICE



General details:

Product function		reversing contactor
Size of the contactor		S00
Width	mm	90
Height	mm	67
Depth	mm	72
Item designation		
<ul style="list-style-type: none"> • according to DIN EN 61346-2 • according to DIN 40719 extendable after IEC 204-2 / according to IEC 750 		Q K

Control circuit:

Type of voltage / of the controlled supply voltage		DC
Control supply voltage / 1		
<ul style="list-style-type: none"> • for DC • rated value 	V	24

Main circuit:

Operational current / at AC-3 / at 400 V		
<ul style="list-style-type: none"> • rated value 	A	7
Service power / at AC-3 / at 400 V		

• rated value

kW 3

Auxiliary circuit:

Number of NC contacts / for auxiliary contacts / per direction of rotation

0

Number of NO contacts / for auxiliary contacts / per direction of rotation

0

Connection type:

Design of the electrical connection / for main current circuit

screw-type terminals

Type of mounting

screw and snap-on mounting onto 35 mm standard mounting rail according to DIN EN 50022

Ambient conditions:

Ambient temperature

• during operating

°C

-25 ... +60

Protection class IP / on the front

IP20

Certificates/approvals:

General Product Approval

Declaration of
Conformity

Test Certificates



CSA



GOST



UL



EG-Konf.

[Special Test Certificate](#)

Shipping Approval



BUREAU
VERITAS



DNV



GL



LRS



PRS



RINA

Shipping Approval

other



RMRS

[other](#)

[Environmental Confirmations](#)

Further information:

Information- and Downloadcenter (Catalogs, Brochures,...)

<http://www.siemens.com/industrial-controls/catalogs>

Industry Mall (Online ordering system)

<http://www.siemens.com/industrial-controls/mall>

CAX-Online-Generator

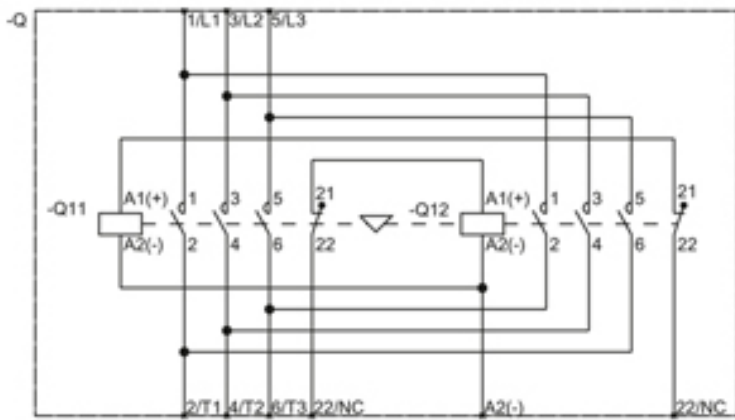
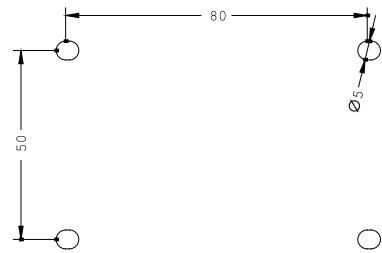
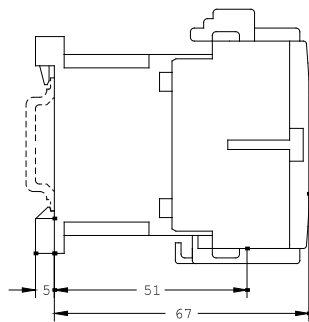
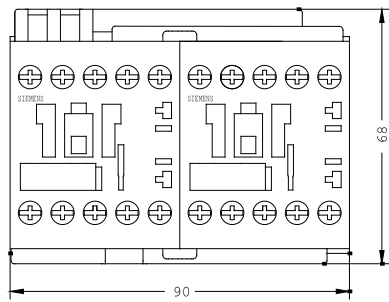
<http://www.siemens.com/cax>

Service&Support (Manuals, Certificates, Characteristics, FAQs,...)

<http://support.automation.siemens.com/WW/view/en/3RA1315-8XB30-1BB4/all>

Image database (product images, 2D dimension drawings, 3D models, device circuit diagrams, ...)

http://www.automation.siemens.com/bilddb/cax_en.aspx?mlfb=3RA1315-8XB30-1BB4



last change:

Feb 26, 2013