

COMPACT SWITCH 30MM WIDE WITH M12 CONNECTOR SNAP-ACTION CONTACTS 1NO+1NC ROLLER PLUNGER,



Product designation	compact switch
General technical data	
Product function	
• positive opening	Yes
Insulation voltage	
• rated value	400 V
Degree of pollution	3
Surge voltage resistance rated value	4 kV
Protection class IP	IP67
Shock resistance	
• acc. to IEC 60068-2-27	30 g / 11 ms
Vibration resistance	
• acc. to IEC 60068-2-6	0.35 mm/5g
Mechanical service life (switching cycles)	
• typical	5 000 000
Electrical endurance (switching cycles)	
• at AC-15 at 230 V typical	100 000

Electrical endurance (switching cycles) with contactor 3RH11, 3RT1016, 3RT1017, 3RT1024, 3RT1025, 3RT1026 typical	500 000
Electrical operating cycles in one hour with contactor 3RH11, 3RT1016, 3RT1017, 3RT1024, 3RT1025, 3RT1026	1 800
Thermal current	10 A
Material of the enclosure of the switch head	stainless steel
Equipment marking <ul style="list-style-type: none"> • acc. to DIN EN 61346-2 • acc. to DIN EN 81346-2 	B B
Active principle	mechanical
Repeat accuracy	0.05 mm
Minimum actuating force in activation direction	15 N
Operating current at AC-15 <ul style="list-style-type: none"> • at 230 V rated value 	3 A
Operating current at DC-13 <ul style="list-style-type: none"> • at 125 V rated value 	0.55 A

Enclosure

Design of the housing	block
Material of the enclosure	metal
Coating of the enclosure	painted
Design of the housing acc. to standard	No

Drive Head

Design of the operating mechanism	roller plunger
Shape of the switch head	roller
Design of the switching function	snap-action contact

Connections/Terminals

Type of electrical connection	M12 plug, fixed, 5-pole
-------------------------------	-------------------------

Mechanical data

Design of plug-in connection	M12 connector, 5-pole: pin 1= terminal BK, pin 2= BK/WH, pin 3= BU, pin 4= BN, pin 5= GN/YE
------------------------------	---

Communication/ Protocol

Design of the interface	without
-------------------------	---------





Ambient conditions

Ambient temperature <ul style="list-style-type: none"> • during operation • during storage 	-25 ... +85 °C -25 ... +85 °C
--	----------------------------------

Installation/ mounting/ dimensions

Mounting position	any
Mounting type	screw fixing

Certificates/approvals

General Product Approval	Declaration of Conformity	other
 CCC	 UL	  EG-Konf. Confirmation

Further information

Information- and Downloadcenter (Catalogs, Brochures,...)

<http://www.siemens.com/industrial-controls/catalogs>

Industry Mall (Online ordering system)

<https://mall.industry.siemens.com/mall/en/en/Catalog/product?mlfb=3SE5413-0CD20-1EB1>

Cax online generator

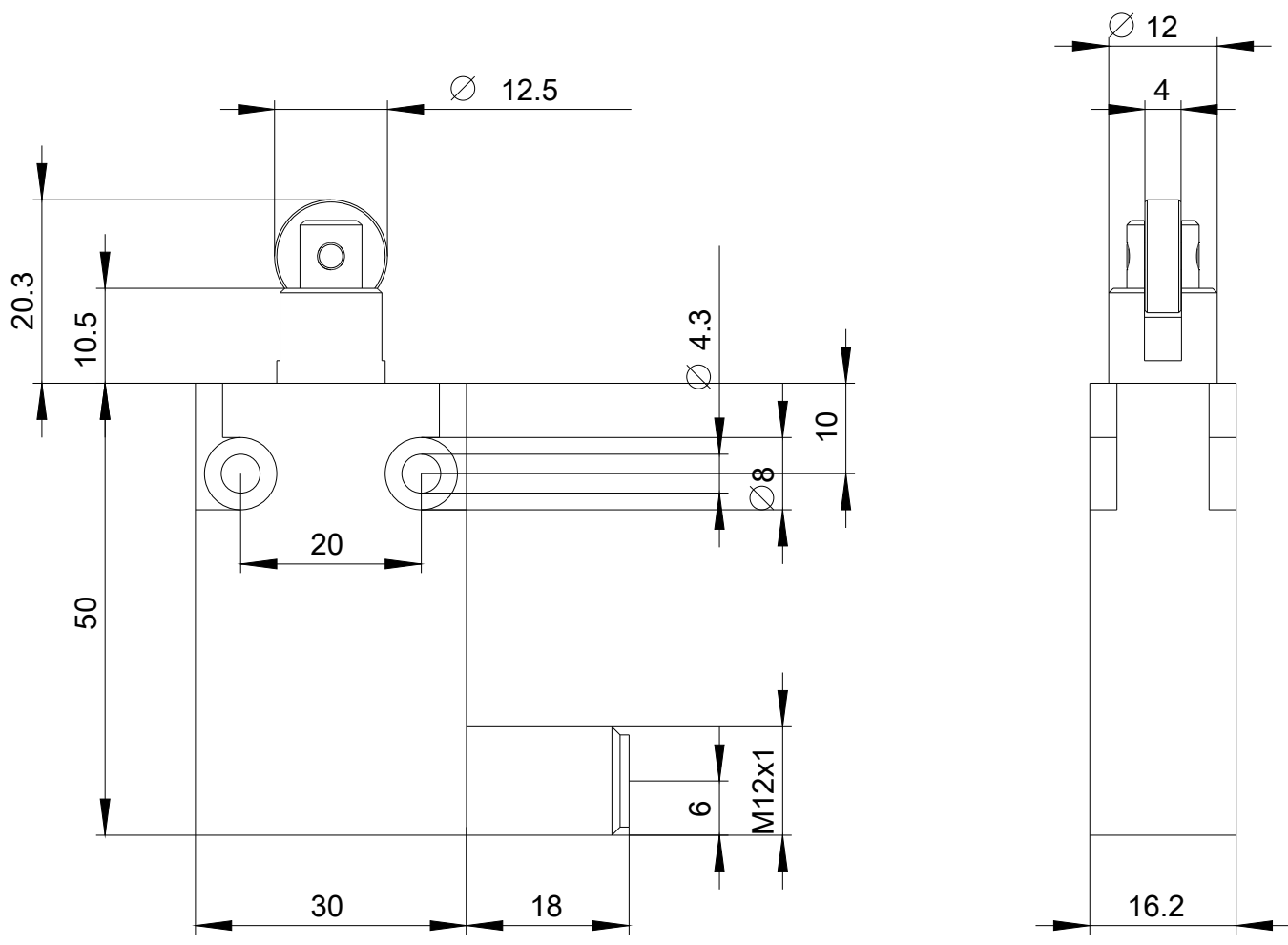
<http://support.automation.siemens.com/WW/CAXorder/default.aspx?lang=en&mlfb=3SE5413-0CD20-1EB1>

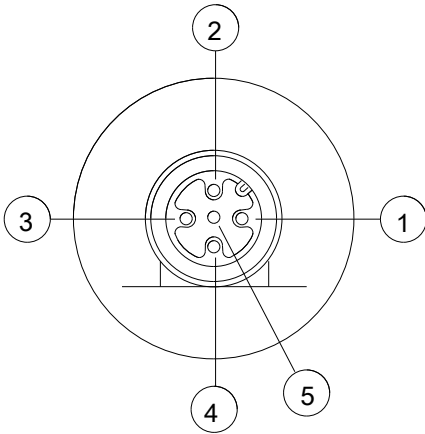
Service&Support (Manuals, Certificates, Characteristics, FAQs,...)

<https://support.industry.siemens.com/cs/ww/en/ps/3SE5413-0CD20-1EB1>

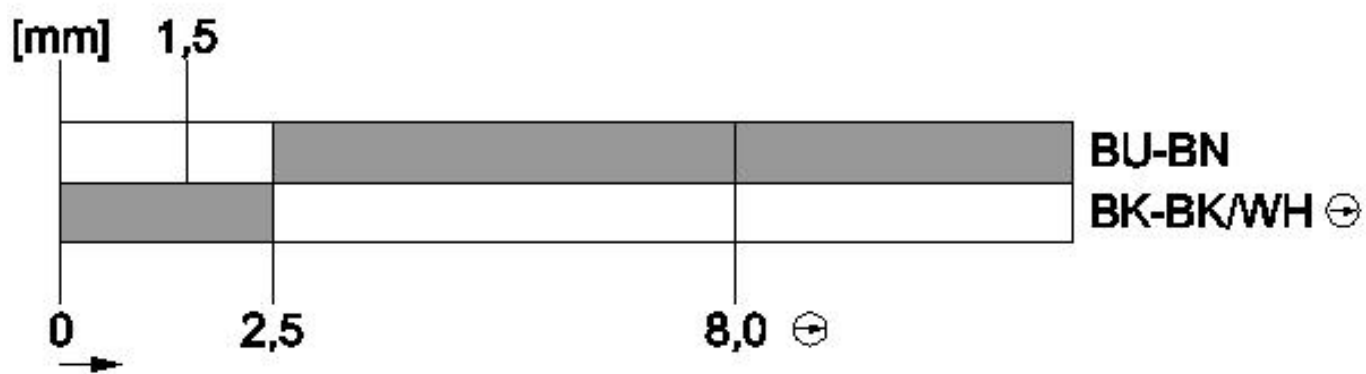
Image database (product images, 2D dimension drawings, 3D models, device circuit diagrams, EPLAN macros, ...)

http://www.automation.siemens.com/bilddb/cax_de.aspx?mlfb=3SE5413-0CD20-1EB1&lang=en





- ① BK = black
- ② BK/WH = black/white
- ③ BU = blue
- ④ BN = brown
- ⑤ GN/YE = green/yellow



last modified:

08/07/2017