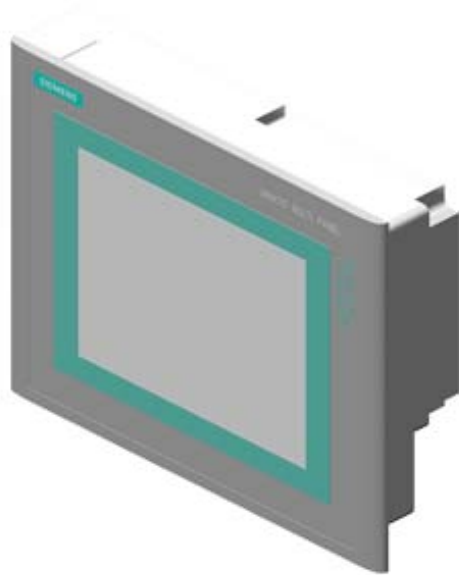


*** SPARE PART*** SIMATIC MP 277 8" TOUCH TFT MULTI
 PANEL 7,5" TFT DISPLAY 6 MB CONFIGURING MEMORY,
 CONFIGURABLE WITH WINCC FLEXIBLE 2005 STANDARD SP1
 OR HIGHER



General information	
Customer-specific configuration	Yes
Display	
Design of display	TFT
Screen diagonal	7.5 in
Number of colors	65 536
Color type	Colors
Resolution (pixels)	
• Horizontal image resolution	640 Pixel
• Vertical image resolution	480 Pixel
Backlighting	
• MTBF backlighting (at 25 °C)	50 000 h
Control elements	
Control elements	Touch screen
Keyboard fonts	
• Numeric/alphabetical input	Yes / Yes
— hexadecimal keyboard	Yes
Touch operation	

<ul style="list-style-type: none"> • Design as touch screen 	Yes; analog, resistive
Connection type	
<ul style="list-style-type: none"> • Connection for mouse/keyboard/barcode reader 	USB / USB / USB
Installation type/mounting	
Mounting position	vertical
Processor	
Processor type	ARM
Memory	
Type of memory	Flash / RAM
Memory available for user data	6 Mbyte
Main memory	
<ul style="list-style-type: none"> • Capacity of main memory, max. 	128 Mbyte
Time of day	
Clock	
<ul style="list-style-type: none"> • Type • retentive • synchronizable 	Hardware clock, battery backup, synchronizable Yes Yes
Interfaces	
Interfaces/bus type	1 x RS422, 1 x RS485, 1 x Ethernet (RJ45) (max. 12 Mbit/s)
Number of RS 485 interfaces	1
<ul style="list-style-type: none"> • Transmission rate, max. 	12 Mbit/s
USB port	2 x USB
Multimedia card/SD card slot	1x Multimedia Card slot, up to 128 MB
Industrial Ethernet	
<ul style="list-style-type: none"> • Industrial Ethernet interface 	1 x Ethernet (RJ45)
Degree and class of protection	
Front	IP65
IP (at the front)	IP65
IP (rear)	IP20
Standards, approvals, certificates	
Certifications	CE, UL
Ambient conditions	
Ambient temperature during operation	
<ul style="list-style-type: none"> • min. • max. 	0 °C 50 °C
Ambient temperature during storage/transportation	
<ul style="list-style-type: none"> • min. • max. 	-20 °C 60 °C

Relative humidity	
• Operation, max.	80 %
Operating systems	
pre-installed operating system	Windows CE
Configuration	
Message indicator	Yes
Alarm system (incl. buffer and acknowledgment)	Yes
Process value display (output)	Yes
Process value default (input) possible	Yes
Recipe management	Yes
Configuration software	
• Configuration tool	WinCC flexible Standard Version 2005 SP1 or higher (to be ordered separately)
Languages	
Online languages	
• Number of online/runtime languages	16
Project languages	
• Languages per project	32
Functionality under WinCC (TIA Portal)	
Libraries	Yes
Task planner	Yes
Help system	Yes
• Number of characters per info text	70
Message system	
• Number of alarm classes	32
• Number of messages	4 000
• Bit messages	Yes
— Number of bit messages	4 000
• Analog messages	Yes
— Number of analog messages	4 000
• System messages HMI	Yes
• System messages PLC	Yes
• System messages, other (SIMATIC S7, Sinumerik, Simotion, etc.)	Yes
• Lines	1
• Number of characters per message	80
• Number of process values per message	8
• Acknowledgment groups	Yes
• Message indicator	Yes
• First/last value	Yes
Recipe management	

• Number of recipes	300
• Data records per recipe	500
• Entries per data record	1 000
• Recipe memory	64 KB integrated Flash, expandable
Variables	
• Number of variables per device	2 048
• Number of variables per screen	200
• Number of variables	1 000
• Type Date & Time	2 048
• Limit values	Yes
• Multiplexing	Yes
• Structures	Yes
Images	
• Number of configurable images	500
• Permanent window/default	Yes
• Start screen configurable	Yes
• Image selection by PLC	Yes
• Image number in the PLC	Yes
Image objects	
• Text objects	10,000 text elements
• Number of I/O fields per image	200
• Number of date/time fields	200
• Return	Yes
• Graphics object	Bit maps, icons, vector graphics
— Icons	1 000
Complex image objects	
• Status/control	With SIMATIC S7
• dynamic objects	Diagrams, bar graphs, sliders, analog display, invisible buttons
— Number of objects per project	1 000
— Number of curve diagrams per image	10
• Methods	Trend / profile
• Bar graphs	
— Number of bars per chart	10
• Sliders	
— Number of slides per image	10
• Pointer instruments	
— Number of analog indicators per image	10
• Limit value lines	Yes
• Number of alphanumerical fields	300
— alphanumeric fields per image	200
• Number of numerical fields	2 048

— numerical fields per image	200
• Number of password fields	2 048
• Number of visible switches per project	200
— visible switches per image	200
— hidden switches per image	200
• Number of status switches per project	200
— Number of status switches per image	200
• Number of selector switches per project	200
— Selector switches per image	200
• Number of decade switches per project	200
— Decade switches per image	200
• Number of signal lamps per project	200
— Signal lamps per image	200
Attributes for dynamic objects	
• Color change	Yes
• X/Y movement	Yes
• Hide	Yes
Lists	
• Number of text lists per project	500
• Number of text lists per image	200
• Number of entries per text list	256
• Number of graphics lists per project	400
• Number of graphic lists per image	200
• Number of entries per graphics list	256
Archiving	
• Number of archives per device	20
• Number of measuring points per project	20
• Number of entries per archive	10 000
• Message archive	Yes
• Process value archive	Yes
• Archiving methods	
— Sequential archive	Yes
— Short-term archive	Yes
• Memory location	SD and MultiMediaCard
— Ethernet	Yes
• Data storage format	
— CSV	Yes
• Online evaluation	
— using trend curves	Yes
Filters	
• cyclic	Yes

• Tolerance	Yes
• Change	Yes
Security	
• Number of user groups	50
• Number of user rights	32
• Password export/import	Yes
Logging through printer	
• Recording/Printing	Alarms, report (shift report), color print, hardcopy
Transfer (upload/download)	
• Transfer of configuration	MPI/PROFIBUS DP, USB, Ethernet, automatic transfer recognition
Process coupling	
• Connection to controller	S5, S7-200, S7-300/400, TI 505, SINUMERIK, SIMOTION, Allen Bradley (DF1), Allen Bradley (DF485), Mitsubishi (FX), OMRON (LINK/Multilink), Modicon (Modbus) see chapter "System interfaces"
• S7-200	Yes
— PPI (point-to-point)	Yes
— PPI network	Yes
— MPI	Yes
— PROFIBUS DP	Yes
— Ethernet	Yes
• S7-300/400	Yes
— MPI	Yes
— PROFIBUS DP	Yes
— PROFINET	Yes
• S5	Yes
— serial	Yes
— PROFIBUS DP	Yes
• TI 505	Yes
• Allen Bradley (DF1)	Yes
• Allen Bradley (DF485)	Yes
• Mitsubishi (FX)	Yes
• Mitsubishi (MP4)	Yes
• Telemecanique (Uni-Telway)	Yes
• OMRON (LINK/Multilink)	Yes
• Modicon (Modbus)	Yes
• GE-Fanuc (SNP)	Yes
Functions	
• TAB sequence	Yes
• Calculating functions	Yes
• Animate	Yes

Service tools/configuration aids	
• Clean screen	Yes
• Touch calibration	Yes
• Backup/Restore manually	Yes
• Simulation	Yes
• Device switchover	Yes
• Delta transfer	Yes
Expandability/openness	
• Open Platform Program	Yes
Peripherals/Options	
Peripherals	Printer, barcode reader
• SIMATIC HMI MM memory card: Multi Media Card	Yes
• SIMATIC HMI SD memory card: Secure Digital memory card	Yes
• USB memory	Yes
Additional software components loadable	Yes
Dimensions	
Width of the housing front	240 mm
Height of housing front	180 mm
Mounting cutout, width	226 mm
Mounting cutout, height	166 mm
Overall depth	60 mm
Weights	
Weight (without packaging)	1.61 kg
Other	
free hotline	Yes
Warranty period	1 y
last modified:	04/28/2017